

## FIXTURE SPECIFICATIONS

### INTENDED USE

The specification grade **Alcon Lighting iLED Series Commercial LED Linear Surface Direct Down Lighting** delivers continuous clean lines and clear light to commercial, hospitality and residential interior flush mount lighting applications. Our modern, slim profiles and stylish ceiling light fixture designs offer excellent illumination, exceptional performance and versatility in offices, classrooms, conference rooms, museums, retail outlets, hotels, restaurants, and more. The iLED integrated LED linear lighting is available 2', 4', and 8'.

### AVAILABLE LENGTHS

**2FT** | W 5.75" x L 23.6" x H 4.6"

**4FT** | W 5.75" x L 47.2" x H 4.6"

**8FT** | W 5.75" x L 94.4" x H 4.6"

**Custom Length** | Consult Factory

### FEATURES

**Construction:** 22 Gauge Baked White Enamel Cold Rolled Steel

**Lens:** Prismatic Acrylic

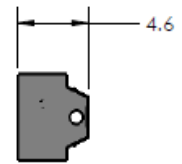
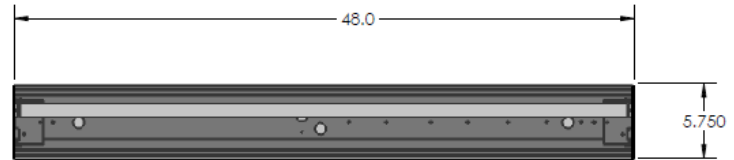
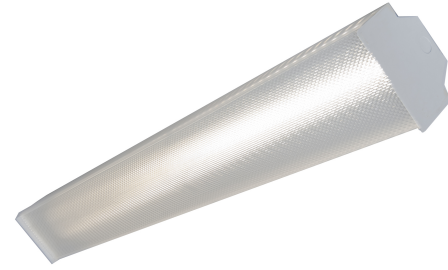
**Voltage:** 120-277V

**Dimming:** 0-10V

**Life:** 50,000 Hours

**Warranty:** 5 Years Carefree for Parts & Components (Labor Not Included)

**Listings:** cETLus Listed



## ORDERING INFORMATION Example: (11136-2-30K-EM)

Model	Length   Wattage   Lumens	Color Temp	Options
<b>11136</b> iLED Surface	<b>2</b> 24"   15 Watts   1700 Lumens	<b>30K</b> 3000K	<b>EM</b> Remote Emergency Backup Battery
	<b>4</b> 48"   18 Watts   2100 Lumens	<b>35K</b> 3500K	
	<b>8</b> 96"   36 Watts   4200 Lumens	<b>40K</b> 4000K	
		<b>50K</b> 5000K	